

How to Book

Call the Bookings Line on:
01904 650333

Email us at:
groupbookings@ymt.org.uk

Please have the following information ready;

- Preferred dates and time of visit
- School contact details, including e-mail contact for the lead teacher
- Number and ages of students
- Number of adults (please ensure you have correct ratios)
- Workshop session you would like to book

Payment is by cash, cheque, credit card or invoice.

Bookings will be confirmed in writing along with a 'Planning Your Visit' Guide.

Teacher's notes for workshops are available/downloadable from our website or sent by email.

York Castle Museum

The Eye of York, York YO1 9RY

Opening times: 9.30am – 5.00pm daily
(10am, Fridays in term time)

Admission prices:*

School Adult:	£6.50
Student:	£6.00
School Child:	£4.00

Yorkshire Museum & Gardens

Museum Gardens, York YO1 7FR

Opening times:
10.00am – 5.00pm daily

Admission prices:*

School Adult:	£5.50
Student:	£5.00
School Child:	£3.50

***FREE**
Museum Entry
for York Schools

Providing excellent Learning resources and facilities is at the heart of all that we offer at YMT. In recognition of this, each of our venues has been awarded the Learning Outside the Classroom Quality Badge.



York Art Gallery, York Castle Museum and the Yorkshire Museum & Gardens have all been awarded the Sandford Award for Heritage Education. The award recognises quality and excellence in educational services and facilities.



Embed your trip to our museums and gallery by visiting the York Museums Trust pages of www.mylearning.org. Here you will discover a range of 'Learning Journey' resources for teachers and learners specifically designed to support and enhance your visit.



History Learning Programme 2010/11

Secondary Schools and Colleges

Enquire | Interpret | Communicate | Understand



To make a booking please call 01904 650333
www.yorkmuseumstrust.org.uk



HANDS ON HISTORY *at the* YORK CASTLE MUSEUM

02

03

York Castle Museum

Home to the world famous recreated Victorian Street, Kirkgate, and the new and visually exciting 'Prison Experience', York Castle Museum is the perfect venue to explore and understand how people have lived over the past 300 years. Thousands of everyday historical objects are arranged in galleries exploring the Victorians, Houses and Homes, Toys, World War 2 and the 1960s – to name but a few! Find out about birth, marriage and death in 'Cradle to Grave' or discover weapons and armour in the Military Galleries. The Kitchen Studio, Military Studio and Textiles Studio offer you the chance to interact with objects more closely – look out for the special events taking place there throughout the year.

Get Hands on with History

Discover the awe inspiring collections of the York Castle Museum and the Yorkshire Museum with your students to bring history to life outside the classroom. Workshops are interactive and hands-on, allowing students to handle genuine artefacts and take part in creative and interesting activities to develop their key skills. Both museums have dedicated learning spaces and sessions are delivered by experienced learning staff.

Yorkshire Museum

The new look museum has undergone a complete transformation. Three fantastic new exhibitions and refurbished learning rooms make this an unmissable venue for a school visit.

Roman York: Meet the People of the Empire tells the story of the real people who lived and worked in York.

Medieval York: The Power and the Glory focuses on the beautiful artefacts of medieval York and St Mary's Abbey.

Extinct: A Way of Life is an interactive look at why and how species (including the dinosaurs) have disappeared throughout time and what has evolved to take their place.

Also new for 2010 is the **History of York Experience**, an AV spectacular which tells the fascinating story of York.

Defence, Defiance & Duty at York Castle

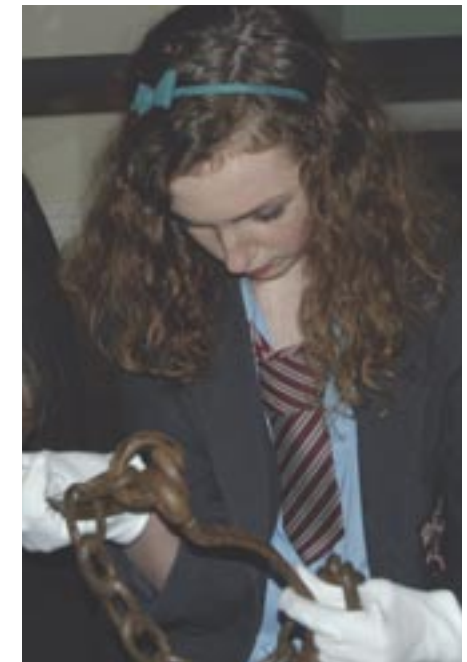
Key Stage: KS3
Duration: Full day

A full-day cross-curricular session developed in partnership between English Heritage and York Museums Trust. Travel back to the city of York in 1322. The rebellion by the Northern Barons has failed and King Edward II's poor leadership and high taxes continue to cause unrest at all social levels. Investigate life within the castle walls for all its inhabitants and sample the sights, smells and tastes of medieval life, including original objects from the period.

Please note: Access to Clifford's Tower is via steep steps only.

History, Citizenship

Group Size: 70 – 90 students
Cost: £5 per student





04

Rioting, Reasoning and Reform

Key Stage: KS3
Duration: 6 weeks approx



This session, in partnership with the British Library's 'Campaign! Make an Impact' project, will develop pupil knowledge and understanding of local history with a focus on related campaigns. The study of specific campaigns will enable pupils to identify key tactics used and evaluate their effectiveness in achieving the campaign objectives. The knowledge and skills gained will then be transferred to the development of active citizenship skills through the running of the pupils' own campaigns.

During the session the students compare up to 3 historical campaigners, each with a strong link to York. William Wilberforce preaches the need to reform Slavery Laws in the Georgian Period Room, as he did a number of times to the people of the City from the Eye of York; Elizabeth Fry pleads for Prison Reform from the Education Cells, as she did when she saw the dire conditions in York Castle Prison in 1818; Adela Pankhurst rouses the masses in Kirkgate to support Women's right to vote.

In addition to the taught session, schools delivering this 'Campaign! Make an Impact' project receive a model 6 week (half term) scheme of work and extensive downloadable materials and resources.

History, Citizenship

Museum Visit: 1.5hrs, 2hrs (see below)
Group Size: 35 Students max
Cost: 2 x Campaign focus = £120 (1.5hrs)
3 x Campaign focus = £170 (2hrs)



05

History Around Us: The Development of Castles and Fortified Houses 1066-1400

Key Stage: KS4
Duration: 6 weeks approx

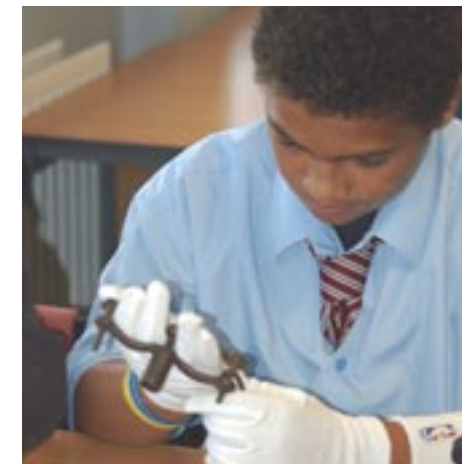
Geared toward the AQA GCSE Syllabus A, this resource enables students to critically explore and examine the medieval history and purpose of York Castle and later interpretations of the site through Primary and Secondary sources and artefacts.

In addition to the taught session, schools delivering this project receive a model 6 week (half term) scheme of work and supporting resources all of which support the Controlled Assessment Questions:

1. Why was the site you have studied created?
2. Consider the interpretation of the site that you have been provided with. What evidence from the site supports or contradicts this interpretation?
3. How do other historical sources that you have used in your study help you to understand what you have seen at the site?

GCSE History, AQA Syllabus A

Museum Visit: 2hrs
Group Size: Up to 75 Students
Cost: £120 per group



HANDS ON HISTORY *at the* YORKSHIRE MUSEUM



06

07

ROMANS

Salve! Citizens of Eboracum

Key Stage: KS3
Duration: 2 hours

Citizens of Roman York are waiting to meet you in the museum. Explore the lives of the lady found buried with fabulous grave goods, the Baltic trader, and the potter, to reveal their lives in Eboracum. Use this information and the work of Caroline Lawrence, author of *The Roman Mysteries*, to inspire you to write a short story, draw a cartoon strip or write a newspaper article about your chosen citizen. Then present it to the group.

History knowledge, skills and understanding

Group Size: 30 students
Cost: £80 per group

Dramatis Personae – Roman play & performances

Key Stage: KS3 & KS4
Duration: Full day

The students use information about the six citizens in the Roman Gallery, the artefacts they were found buried with, facts on Eboracum from the exhibition and their own knowledge from work already done in the classroom. From this data the students develop a play about a day in the life of the citizen. They will create a set (using artefacts from the collections), dress the characters in costume and create masks for each of the characters. At the end of the day they present their play to the audience. Links to GCSE History, English, Drama.

En1 Speaking and listening

Group Size: 30 students
Cost: £120 per group

FAQ'S

How much are the entrance fees?

York schools have free entry to all of the York Museums Trust sites.
For non-York schools, a museum entrance fee applies to the Castle Museum and the Yorkshire Museum – please see the back page for details. York Art Gallery is free. Group rates don't apply for parties of less than ten.

Where can we park?

Parking information can be found on the City of York Council website;
www.york.gov.uk/transport/Parking/Car_parks/
Telephone: 01904 551309.

Is there a cancellation fee?

Yes, a cancellation fee applies if notice is not given in sufficient time (one full working day is acceptable). The fee is £60. We reserve the right to cancel sessions in the event of excessive lateness.

What is the minimum number of pupils for a workshop?

There is no minimum number of pupils required – prices are per workshop.

What help is available for writing Risk Assessments?

Risk Assessments for each workshop are sent out with the Teachers Pack and can also be downloaded from our website. Teachers are offered a free site visit in advance to plan their own Risk Assessments. Guidance is included in the Planning Your Visit guide.

Are there facilities for groups with wheelchair users?

Admission is free to wheelchair users and their helpers but please note that the upper floors of the York Castle Museum are not accessible to wheelchair users. Each site has disabled access toilets.

Can we book a space to eat lunch?

The Yorkshire Museum has a bookable lunch space, 'The Diner-Saurus', and spaces may be available the York Castle Museum upon request. Both the Museum Gardens and the York Castle Museum grounds are ideal for picnics in good weather.

Can we take photographs?

Photographs can be taken at the York Castle Museum and the Yorkshire Museum.